

Adjust-a-Sink System[®]

K100 SERIES

3-Stage Telescoping Drain System

****INSTALLATION INSTRUCTIONS****

8/08

Congratulations on the purchase of your new Adjust-a-Sink[®] System-the elevating sink that offers the ultimate in comfort and safety. The Adjust-a-Sink[®] System utilizes a unique hydraulic lift mechanism and a UPC listed, patented 3-stage telescoping plumbing unit* that allows the operator to raise and lower the shampoo bowl a total of 12" simply by pumping the convenient foot pedal. This foot pedal can also be rotated to the side, providing the stylist an unobstructed work area when needed.

The Adjust-a-Sink[®] System was designed with simplicity and long lasting durability in mind. The lift system, cultured marble shampoo bowl, laminated panels and chrome plated pump make the entire system easy to clean and virtually maintenance free.

IMPORTANT: Please read through all these instruction sheets and become familiar with all the parts and requirements PRIOR to installation. Although the system can be installed in most work areas with the proper water and waste connections, there are necessary steps that are very important to follow to ensure the proper operation of the Adjust-a-Sink[®].

The following Step-by-Step Instructions reference the following Accessible Systems drawings:

K100 Overall Assembly, Sheet 1

K100 Overall Assembly, Sheet 2

K100-87 Plumbing Rough-In (3-Stage Drain)

Required Hardware/Supplies Not Included: 1 ½" White PVC UPC Listed P-Trap, ½" ID Rigid Copper Tubing, 90 Degree Supply line shut-off valves, Long-Length Sheet Rock Screws, 5/16" Bolts-Washers-Nuts (if mounting to cabinet), Plumbing Supplies such as Plumbers Putty, Sealant, Silicone Caulk, etc.

Thank you for purchasing the Adjust-a-Sink[®]. For replacement part orders or further information please contact Customer Service at: Accessible Systems LLC - 2940 Weeks Ave S.E. Minneapolis MN 55414 (612) 238-4600

Local Building Codes May Apply. Adjust-a-Sink[®] is a registered trademark of Accessible Systems, LLC

*Patent Numbers 5,893,396 5,867,847

"Adjust-A-Sink"[®] System by Accessible Systems, LLC
2940 Weeks Ave S.E. – Minneapolis, MN 55414
PHONE: 612-238-4600 FAX: 612-238-4601
Web Site: www.adjustasink.com

STEP 1: SITE EVALUATION, PLUMBING ROUGH IN, and MOUNTING PANEL PREPARATION.

The Adjust-a-Sink® System is designed to be mounted directly to the face of a finished interior wall, with the proper rough-in plumbing already installed. The System can also be cabinet or station mounted by a qualified installer.

INSTALLERS, PLEASE NOTE:

If the Adjust-a-Sink® unit is to be mounted on a cabinet face or a shampoo station, it is extremely important that the cabinetry counter top or ledge be **FLUSH and SQUARE BEHIND** the Adjust-a-Sink Wall Mounting Panel. There must be **NO** counter top lip or ledge overhanging the Wall Mounting Panel, as it will interfere with the sink action as it elevates, causing possible damage to both the Adjust-a-Sink and surrounding cabinetry. Please allow 6-12" on either side of the unit for clearance and stylist work space! Accessible Systems, LLC **will not** be liable for injury or damages caused by improper installation.

Referring to drawing **K100-87** Plumbing Rough-In, note that the Wall Mounting Panel is 22" wide and 33" High. The bottom of the Wall Mounting Panel rests on the finished floor. The installer should verify that there is sufficient space to mount this panel, also keeping in mind that the Lift Backsplash itself will elevate an *additional* 12" in height.

The mounted shampoo bowl and its drain is centered within the 22" width of the Wall Mounting Panel that is, the center of the drain is 11" from the left edge. Keeping this in mind will simplify the process.

Recommended and best rough-in plumbing hardware and locations are as follows:

Waste Water Drain Pipe:

1-1/2" ID white PVC: Locate pipe center 11" from the left edge of the Wall Mounting Panel.

14-3/8" max. UP from the finished floor (and bottom edge of the Panel.)

If Using a Hair Trap: Ensure there is enough space under the hair trap to enable you to remove and clean the filter. Stub *out* 8" minimum from finished wall.

(Exact length will be determined at final plumbing.)

NOTE: UPC Listed P-Trap Must Be Used!

IMPORTANT NOTE:

Please reference drawing **K100-87** for the acceptable water line locations (for both waste and supply lines).

"Adjust-A-Sink"® System by Accessible Systems, LLC
2940 Weeks Ave S.E. – Minneapolis, MN 55414
PHONE: 612-238-4600 FAX: 612-238-4601
Web Site: www.adjustasink.com

NOTE: The building drain MUST BE stubbed out of the wall (about 8" out) on the exact center of the unit from left to right. (It may be useful to delay gluing the stub into the wall until making the final hook up).

Supply Water Lines:

1/2" ID rigid copper tube: **HOT:** Locate line 6-5/8" to the *left* of the established waste drainpipe center, 19" MAX *up* from the finished floor. Stub *out* 4" from the finished wall.

COLD: Locate line 4-1/8" to the *left* of the established waste drainpipe center, 19" MAX up from the finished floor. Stub *out* 4" from the finished wall.

PLUMBING NOTE: Since many installations may not be able to locate the plumbing rough in exactly as specified, refer to drawing K100-87 Plumbing Rough-In, again, for the allowable areas plumbing may penetrate the Wall Mounting Panel. **Caution! Plumbing falling outside this area may cause interference problems with moving sink components.** Other plumbing drain/water configurations such as rough in through the floor are permissible, however the installation becomes the responsibility of the installer.

1B: Drilling/Hole Cutting the necessary holes in the Mounting Panel for water supply lines and Drain Pipe: Unpack the Wall Mounting Panel along with the Lift Backsplash. Mark the hole locations on the Mounting Panel per the dimensions that correspond to where the water supply lines and drains are located on the wall (or sturdy cabinet) on which it will mount. Before you begin, verify once more that the wastewater drain pipe and supply water stub-outs have been properly located per drawing **K100-87** Plumbing Rough-In. We suggest that you use the following to drill out the necessary through holes on the mounting panel:

7/8" Min. Dia. – Hot, Cold Water Lines

2 1/4" Min. Dia. Hole Saw – Waste Drain

"Adjust-A-Sink"® System by Accessible Systems, LLC
2940 Weeks Ave S.E. – Minneapolis, MN 55414
PHONE: 612-238-4600 FAX: 612-238-4601
Web Site: www.adjustasink.com

STEP 2: WALL MOUNTING PANEL INSTALLATION

2A. Carefully unpack the balance of the Adjust-a-Sink® System and verify all components are included and undamaged. The Adjust-a-Sink® System comes with most of its components already assembled.

2B. Install the shampoo bowl Sink Mounting Bracket and the Lift Backsplash with the hardware provided. (Use the proper size screws and quantities as required; lock washers and nuts go on the *backside* of the Lift Panel.) **Note:** The Lift Panel is predrilled with the proper number of holes and spacing for many of the most popular shampoo bowls. Using *your* Sink Mounting Bracket as a guide, select the appropriate holes and drill through the Lift Backsplash from the *backside*. This will greatly simplify the mounting procedure.

For smooth operation and dampening effect, the completely assembled Adjust-a-Sink® is intended to be quite heavy. Because of this, it is recommended to locate wall-framing studs behind the finished wall and then fasten the Wall Mounting Panel to the studs using multiple, long length sheet rock screws (not supplied). In some installations where framing members may fall outside the Wall Mounting Panel, apply a generous amount of construction adhesive (not supplied) around the entire back of the panel and secure it to the wall that way. Consult adhesive instructions for proper conditions and restrictions.

If your Wall Mounting Panel requires a different installation arrangement, it is the installer's responsibility to calculate, verify and drill the panel according to the guidelines already established. Again, review drawing **K100-87** Plumbing Rough-In for details.

IMPORTANT NOTE: When securing the unit to a sturdy cabinet, we suggest that you use (4) 5/16" bolts of the appropriate length with (2) 5/16" fender washers, and 1 lock washer and nut per bolt. Space these (4) bolts in a manner that provides maximum support and affords coverage by the Shroud so that bolts are not visible post installation.

2C. Once the Wall Mounting Panel is positively secured to the wall, align the hydraulic lift Floor Plate by adjusting the two socket-set screws hidden beneath the Retainer Ring. See item # 2 on drawing K100 sheet 2.

Remove the six #10-24 pan head screws as indicated but do not discard. Using a 5/32 hex key, turn the two screws equally clockwise: the requirement is to make the Floor Plate perpendicular to the Wall Mounting Plate. Using a small carpenter's square, place one edge up against the Wall Mounting Panel and gauge according. When perpendicular, reinstall the six #10-24 pan head screws. Apply a bead of silicone based caulking (not supplied) all around the base of the Lift Plate at the floor; this will keep water and other grime from collecting underneath. Additionally, seal all along the Wall Mounting Plate bottom edge, where it rests on the floor.

"Adjust-A-Sink"® System by Accessible Systems, LLC
2940 Weeks Ave S.E. – Minneapolis, MN 55414
PHONE: 612-238-4600 FAX: 612-238-4601
Web Site: www.adjustasink.com

STEP 3: FINISH PLUMBING

3A. Finish the supply water line installation. For both the Hot and Cold, use 1/2" x 3/8" (copper tube OD x ID) 90-degree Angle Compression Water Supply Shutoffs and Trim Bezels. (Not Supplied).

3B. Install the faucet, hose and all related pieces to the shampoo bowl per instructions provided with that unit. Be sure to use plumbers putty when installing the basket strainer.

3C. Mount the shampoo bowl on the Sink Mounting Bracket. Be sure to level the sink to the Lift Backsplash, secure its position using the leveling setscrew under the sink and properly secure it by tightening the nut under each side of the bowl.

3D. Pump the hydraulic lift and elevate the shampoo bowl to its highest position. Mount the Drain Pipe Support Bracket assembly using the four 5/16" x 3/4" bolts provided. The top of the Drain Pipe Subassembly should be 20 3/4" from the finished floor. Make sure the two 5/16" bolts holding the drain pipe clamp to the drain support bracket and the hose clamp are just loose enough to make adjustments at this time.

3E. With the shampoo bowl still at its highest position extend the Telescoping drain to the basket strainer. Connect the slip joint nut to the basket strainer; make sure to use the proper gasket at the joint. Make sure all the cables are tight and face towards the wall-mounting panel at this time. Adjust the bowl to ensure the drain parallel to the lift panel (perpendicular to the floor) by adjusting the leveling setscrew under the shampoo bowl. **NOTE: It is critical to the proper operation of the telescopic drain that the telescopic drain is installed perpendicular to the floor – any deviation to this will cause premature wear and possible failure of the drain system.** Now move the unit to the lowest position and tighten the two 5/16" bolts holding the pipe clamp to the drain support bracket making sure the drain is still parallel. Also make sure the bracket is flush with the backside of the bottom section of drain before tightening. Now move the unit to the upper most position. Move the bottom section of the drain unit (2" PVC pipe) up about 1/4" and tighten the hose clamp. Move the unit to both extremes to check for binding. Make any minor adjustments to eliminate any binding before moving on

CAUTION: Do not over tighten the hose clamp to the Drain Pipe Subassembly (#14). Lower the shampoo bowl and observe the action. Again, movement of the Riser Pipe should be smooth and continuous.

The shampoo bowl and basket strainer is shipped directly from the manufacturer. It is possible that there may be slight variations in bowls and basket strainers. If the 3-Stage Telescoping Drain system IS NOT adjusted properly at installation, damage or breakage of the drain system may result - We have attached the bracket on the 3-Stage Telescoping Drain system, but it must be properly adjusted during installation.

IMPORTANT: Do not trim the riser pipe in any way. All components that make up the Drain Pipe Subassembly are integrated and work together. Altering its design will cause premature if not total failure of the telescopic drain mechanism.

3F. Connect the bottom of the Drain Pipe Subassembly to the wastewater drain pipe using a UPC approved PVC P-Trap (not supplied). Use appropriate plumbing methods to seal and secure the P-trap to the supplied reducer and the roughed in 1 ½” waste drain.

Caution: Again, keep in mind that the Riser Pipe telescopes up and down *within* the Drain Pipe Subassembly. Consider proper alignment when performing the final connection of the P-Trap to the Drain Pipe Subassembly and wastewater drain pipe. The Riser Pipe cannot be allowed to bind; the motion should be smooth and continuous. After P-Trap installation and proper alignment and smooth action is achieved, connect the Riser Pipe to the basket strainer and tighten all associated hardware. **Care should be used so as to not cross thread the riser pipe nut onto the basket strainer threads.**

INITIAL TESTING PROCEDURE

- Raise and lower the unit all the way up and down several times to be sure it is operating properly, without binding **before and after** connecting it to the building drain.
- Be sure there is about ¼” total slack in the cable linkage system when the unit is fully extended as described above. It is important that the lift system limits out prior to the drain extending to its full range. Make any minor adjustments that are needed to keep the lift system from binding and to ensure that the lift system limits out prior to the 3-Stage Telescopic Drain Assembly extending to its full range.
- Now ensure that all of the parts are tightened securely and glue the 2” x ½” PVC Reducing Coupling to the P-trap and building drain. Care should be used to ensure you do NOT cause strain or binding on the vertical 3-Stage Telescoping Drain Assembly.

3G. Connect the provided flexible Water Supply Lines to both the faucet and the water supply shutoffs. Use care and good judgment when installing the flexible lines so they are free and unobstructed when traveling with the elevating shampoo bowl.

“Adjust-A-Sink”® System by Accessible Systems, LLC
2940 Weeks Ave S.E. – Minneapolis, MN 55414
PHONE: 612-238-4600 FAX: 612-238-4601
Web Site: www.adjustasink.com

FINAL TESTING/LEAK TESTING PROCEDURE

Turn on the faucet and let run for 3-5 minutes at both the highest and lowest height positions. Check all assembled plumbing joints to verify seals. Take appropriate action to address any leaks. The telescopic drains are pressure tested per ASME standards and date coded prior to shipment—they should not leak if installed properly.

STEP 4. SHROUD INSTALLATION

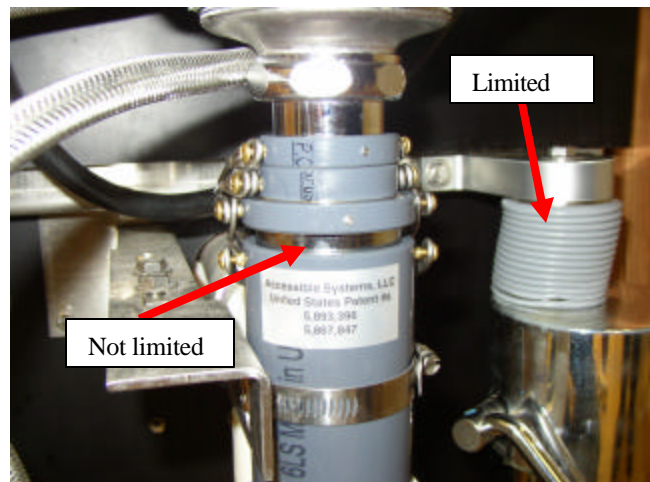
With all the plumbing connected and operating smoothly, and prior to installing the Shroud, observe that the Hydraulic Lift is also operating smoothly by raising and lowering the Shampoo Bowl. The Lift Shafts should glide smoothly between the polyethylene Lift Guides. No further adjustments or maintenance should be required.

Initially the unit should be at the lowest position. Attach the Shroud by hanging the shroud on the single stud on the right side of the lift panel. Hand tighten the 5/16" lock washer and nut to the stud. Loosen the three bolts on the left lift shaft just enough to slide the shroud in between the head of the bolt and the three flat washers. Tighten the top bolt first. Once the top bolt is tight, raise the unit up to provide enough room to tighten the bottom two bolts. Now go back to the nut on the other side and tighten it. **Ensure that there is no interference between the left side of the shroud and the plastic lift guides. If there is, loosen the top left nut and re-position the shroud so that it does not come in contact with the lift guide.**

INSTALLATION REFERENCE PHOTOS:

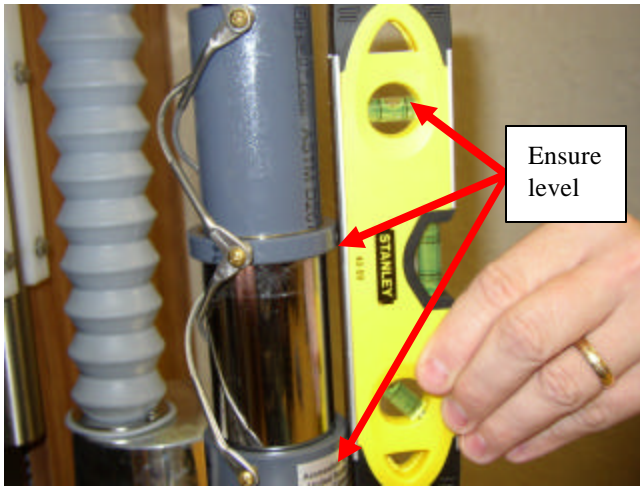


Note: Ensure there is clearance between the elevating backsplash and the counter top lip

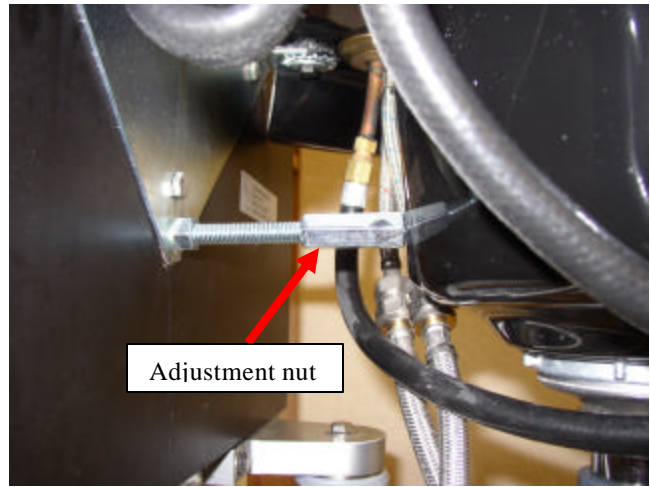


Note: The lift system limits prior to the drain limiting out

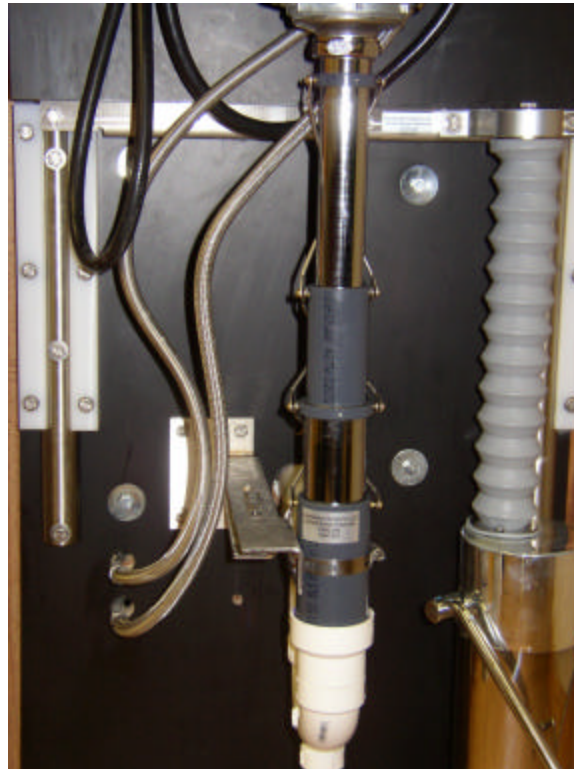
"Adjust-A-Sink"® System by Accessible Systems, LLC
2940 Weeks Ave S.E. – Minneapolis, MN 55414
PHONE: 612-238-4600 FAX: 612-238-4601
Web Site: www.adjustasink.com



Note: Ensure drain is level – perpendicular to floor



Note: Nut for adjusting the sink angle



Note: The lift system limits out prior to the drain limiting out and the drain is perpendicular to the floor

Note: Model shown utilizes side-mounting bracket. Depending upon the height of your waste drain your model will utilize either a side or back mount bracket. Model shown has hot/cold shut-off valves inside of cabinet.

**“Adjust-A-Sink”® System by Accessible Systems, LLC
2940 Weeks Ave S.E. – Minneapolis, MN 55414
PHONE: 612-238-4600 FAX: 612-238-4601
Web Site: www.adjustasink.com**

MAINTENANCE FOR K-100 Adjust-A-Sink®

BASIC FEATURES: The Adjust-a-Sink® System elevates the Shampoo Bowl a total of 12". Distance from the floor to the top of the bowl ranges from approximately 34" to 46". A self-contained, maintenance free foot-operated hydraulic lift provides the lift capacity needed to raise the shampoo bowl. The hydraulic lift's foot pedal is free to rotate approximately 90 degrees to the side anytime the operator requires. Components are manufactured from the highest-grade materials and should provide years of trouble-free service.

Warranty is two (2) years on all parts.

Save the installation instructions for future reference.

IT IS VERY IMPORTANT TO HAVE THE "ADJUST-A-SINK"® INSTALLED CORRECTLY AND THE PLUMBING ALIGNED PERFECTLY. NOT DOING SO COULD RESULT IN UNDUE PRESSURE ON VARIOUS COMPONENT PARTS AND COULD ALSO CAUSE THE PLUMBING TO LEAK.

Lubrication: When the sink will not be in use for a period of time, or over night, lower the sink to its lowest position. This allows the shaft to stay lubricated in the hydraulic fluid. By doing this, it will maintain the smoothness of the elevation. **NOTE: We recommend that you raise and lower the sink at least once daily to ensure proper lubrication all of critical components.**

Cleaning: after use or at the end of the day, wipe the shroud and pump with a clean damp cloth, mild cleaning solution or a stainless steel spray cleaner. This will keep your unit looking new. The shampoo sink should be cleaned on a regular basis as well, using a non-abrasive cleaner. For those units equipped with a **Hair Interceptor**, we recommend that you open and clean it out every six months or sooner if sink use warrants.

It is important to keep the nylon base (the base that the pump sits in) clean as well. The pump is designed to swivel, if it is not kept clean, it will eventually become hard to swivel the pump in the base.

WITH PROPER CARE AND GOOD CLEANING THE "ADJUST-A-SINK"® WILL PROVIDE MANY YEARS OF SERVICE TO BOTH YOU AND YOUR CLIENTS.

Adjust-a-Sink® System

"Adjust-A-Sink"® System by Accessible Systems, LLC
2940 Weeks Ave S.E. – Minneapolis, MN 55414
PHONE: 612-238-4600 FAX: 612-238-4601
Web Site: www.adjustasink.com

OPERATION OF THE ADJUST-A-SINK®

We suggest that stylists “be creative” in adjusting the sink to fit their clients, as each person is unique in their body type. The Adjust-A-Sink® can be adjusted to improve the shampoo experience for most everyone with a little thought and experimentation with height adjustments and head and body positions. Note that the foot pedal swivels to allow for stylist preference. The concept behind the adjustable height, Adjust-a-Sink® is to position the client in a manner that allows them to sit as upright as possible to allow their weight to be evenly distributed throughout the body so as to alleviate pressure on the neck and lower back.

1. Pump the Adjust-a-Sink® up higher than the client’s neck and shoulders.
2. Position the client in the shampoo chair so the back of the chair and the neck of the shampoo bowl are aligned vertically. The client will usually prefer a more upright seating position. We suggest the use of an adjustable back, fixed position shampoo chair if possible.
3. Lower the Adjust-a-Sink® to the client’s comfort level - the client’s neck should fit snug and comfortable, without pressure, against the shampoo bowl.
4. For clients in a wheelchair, use the same method noted above and ensure the bowl is up high enough to clear the wheelchair’s handles and back.
5. Ensure the client’s head is tilted so their forehead is over the bowl. You may need to lower the bowl slightly, and or further recline the client to obtain this desired position. In this position, and with moderate water pressure, you should be able to provide for a comfortable and dry shampoo. Again, the Adjust-a-Sink® works best with the client sitting as upright as possible.

**See photos on page 11 for proper client positioning.
View demonstration video on the website.**

Adjust-a-Sink® System

“Adjust-A-Sink”® System by Accessible Systems, LLC
2940 Weeks Ave S.E. – Minneapolis, MN 55414
PHONE: 612-238-4600 FAX: 612-238-4601
Web Site: www.adjustasink.com

Operation of the Adjust-a-Sink® (cont.)



Position the Client Like This



Not Like This!



Note: Proper Neck/Bowl Position

Adjust-a-Sink® System

“Adjust-A-Sink”® System by Accessible Systems, LLC
2940 Weeks Ave S.E. – Minneapolis, MN 55414
PHONE: 612-238-4600 FAX: 612-238-4601
Web Site: www.adjustasink.com